



ILLUMINATED MIRRORS



THE ART OF AESTHETIC
INNOVATION



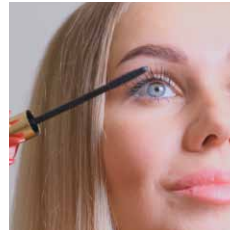
TO KNOW MORE
SCAN THE QR CODE

CUTTING-EDGE SUPERIORITY THAT CUTS ACROSS

UNIQUE BENEFITS



LIGHT UP YOUR WASHROOM: Experience mirrors like never before with vibrant LED lighting



TRUE REFLECTION: High definition mirrors



SPLASH OF SAFETY: Water and dust resistant with IP 55 rating



SAY NO TO FOGGING: Smart defoggers with auto cut-off prevent fogging



SLIM AND SLEEK: A sleek system with just 28 mm thickness



SAVE UP: Luminous output will not be at the cost of energy efficiency



A LEGACY: From the company with over 355 years of mirror making expertise

A RANGE OF LED DESIGNS TO BEFIT YOUR THEME



CLASSIC



CORAL



DAWN



MATRIX

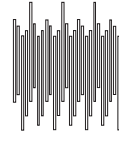
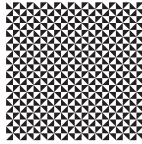


BOHO



CLASSIC

PATTERN LIBRARY

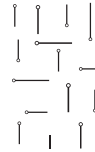
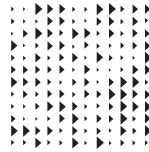
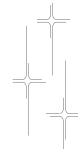


Available sizes:
Small, Medium and Large
Available shapes:
Rectangular and Round



MODERN

PATTERN LIBRARY

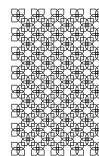
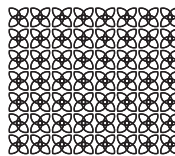
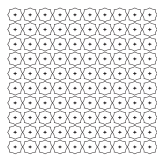


Available shapes:
Rectangular, Round and
Curved Rectangular



ROYAL

PATTERN LIBRARY



Available sizes: Small,
Medium and Large
Available shapes: Rectangular,
Round and Semi Curved.

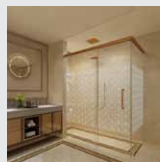
FUSIONS

Aspira Luxe and Shower Enclosure

CLASSIC



C-1.2
SHOWER ENCLOSURE
+ LED MIRROR



ULTRA
LED INTEGRATE
SHOWER ENCLOSURE
+ LED MIRROR

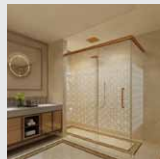


WOOD ACCENT
SHOWER ENCLOSURE
WITH ACCENT + LED
MIRROR WITH ACCENT

MODERN



SPARK
SHOWER ENCLOSURE
+ LED MIRROR

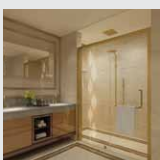


LITE
LED INTEGRATED
SHOWER ENCLOSURE
+ LED MIRROR

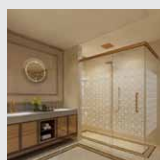


MARBLE ACCENT
SHOWER ENCLOSURE
WITH ACCENT + LED
MIRROR WITH ACCENT

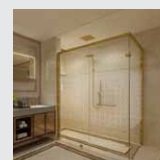
ROYAL



GLINT
SHOWER ENCLOSURE
+ LED MIRROR



CROWN
LED INTEGRATED
SHOWER ENCLOSURE
+ LED MIRROR



ROSE GOLD ACCENT
SHOWER ENCLOSURE
WITH ACCENT + LED
MIRROR WITH ACCENT



**Saint-Gobain India Private
Limited - Glass Business**

Level 7,
Sigapi Aachi Building,
18/3 Rukmani
Lakshmipathy Road,
Egmore, Chennai - 600 008,
Tamil Nadu.

<http://myhome-saint-gobain.com/index.php>

Toll Free No: 1800 1021 215